

AlphaFlow



Workflow Applications

What is Workflow?

- It defines the approval process
- It is the routing slip, not the content
- By design, workflow has no knowledge of what it is tracking

Routing & Request

pg (s) _____

Please Proof & Return by _____

@ _____

Thanks, Lynne x3677

	OPR	OCR	INFO
JSP			
JSD			
JSE			
JSM			
JSA			
JSP			
JSK			
JSS			

Common Workflows & Events

- Workflows
 - Linear
 - Parallel
 - Voting (majority, 2/3, 3/5)
 - Periodic reminders, restarts
- Events
 - Alarm (periodic)
 - Email
 - External (DB logging, ...)

Workflow Use Cases

- 1) Role your own
 - No enterprise data; you manage roles
 - Zope's restricted Python, XML
 - Example: Windows Policy Committee
- 2) Simple Managerial Approval
 - May be a document, report, etc.
 - Example: CD Tracks
- 3) Complex Workflows With In-house Support
 - Python, Perl, Java, PL/Sql
 - Example: Leave Request, Miser

1) Role Your Own

- Minimal support from DBI/INF group
- Use the Plone site to create & maintain
 - AlphaFlow XML (states, roles, transitions, events)
 - Persons in roles (via script)
 - Front end application or form
- Maintain using Plone/AlphaFlow
 - Built-in GUIs
 - API calls
 - Zope's restricted Python scripts

Role Your Own - Example

- Windows Policy Committee Roles
 - representatives from different lab entities:
 - did not align with org-chart roles (no Experiments in org chart...)

2) Simple Managerial Approval

- No coding necessary!
- Uses generic workflow (supervisor or management chain)
- Based on Kerberos Principal of requester
- Initiated via simple web page
 - https://appora.fnal.gov/work_flow_ora/www/generic_wf_api.html
 - Select the workflow
 - Enter a title (email subject and title in Plone)
 - Enter the URL (what the approvers see)

3) Complex Workflows With In-house Support

- Write the AlphaFlow XML workflow
 - (we have examples and we can help)
- Create a URL with XML that identifies roles and persons in roles
 - May be a flat file, CGI script, etc.
 - (due to roll out on the 1st of March)
- Workflow APIs available in Python, Perl, Java and PL/SQL for:
 - Creating and activating workflow items
 - Calculating enterprise, person-in-role data

Enterprise Roles

- Leadership roles (head of organizational group)
 - Supervisor
 - Management chain
- Functional Leader
 - Head of a group that “owns” something
 - Task manager, project manager, activity manager

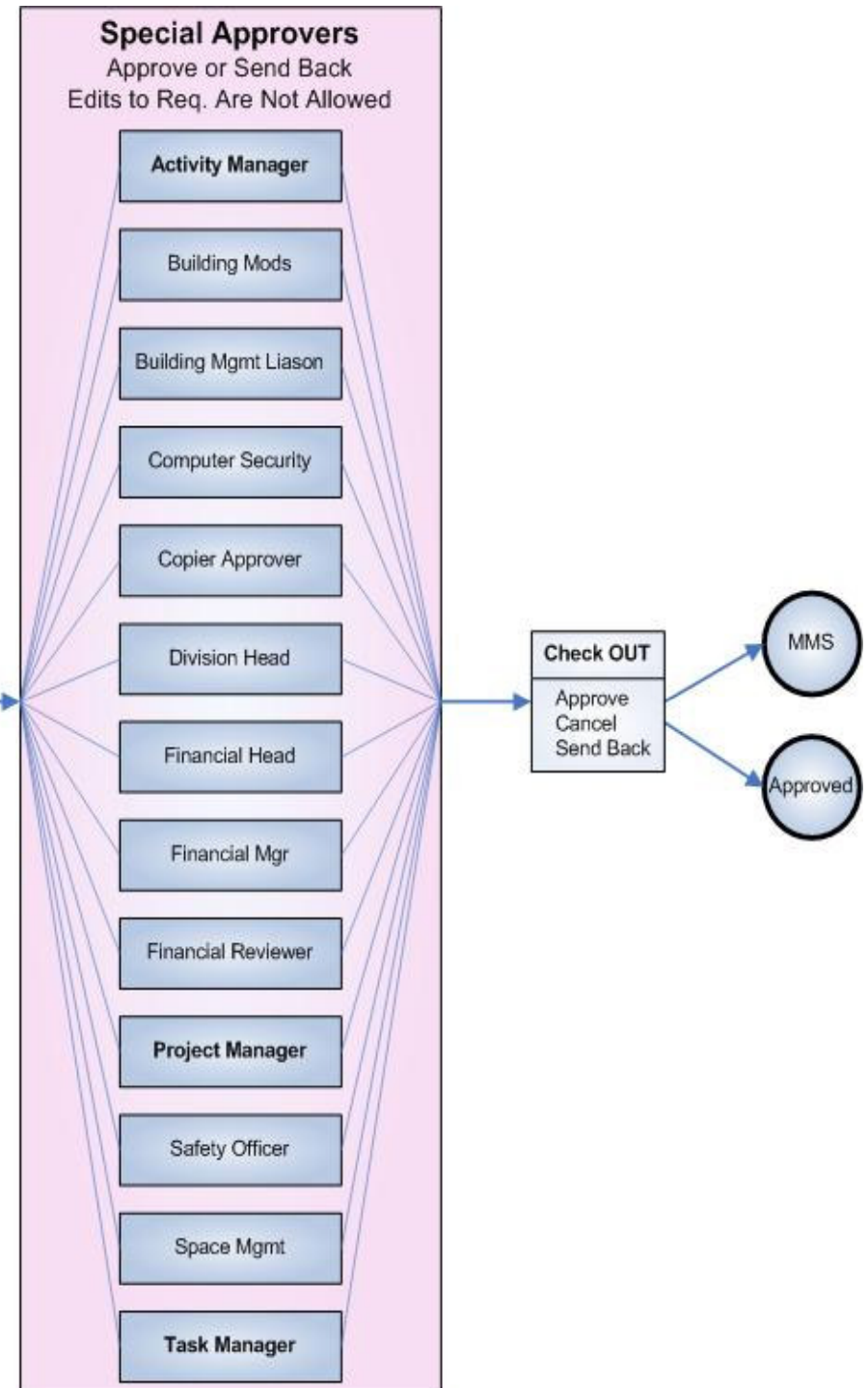
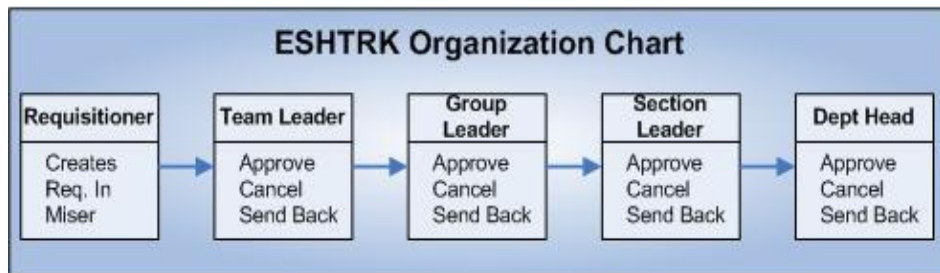
Enterprise Roles

- System Claims
 - System administrator
 - System owner
- Purely Functional
 - Safety officer
 - Computer security approver
 - Financial head, manager and reviewer
- New functional roles are easily added
- A list of Enterprise roles is available at http://appora.fnal.gov/pls/default/work_flow.wf_maint_lib.valid_roles

Advantages of Enterprise Data

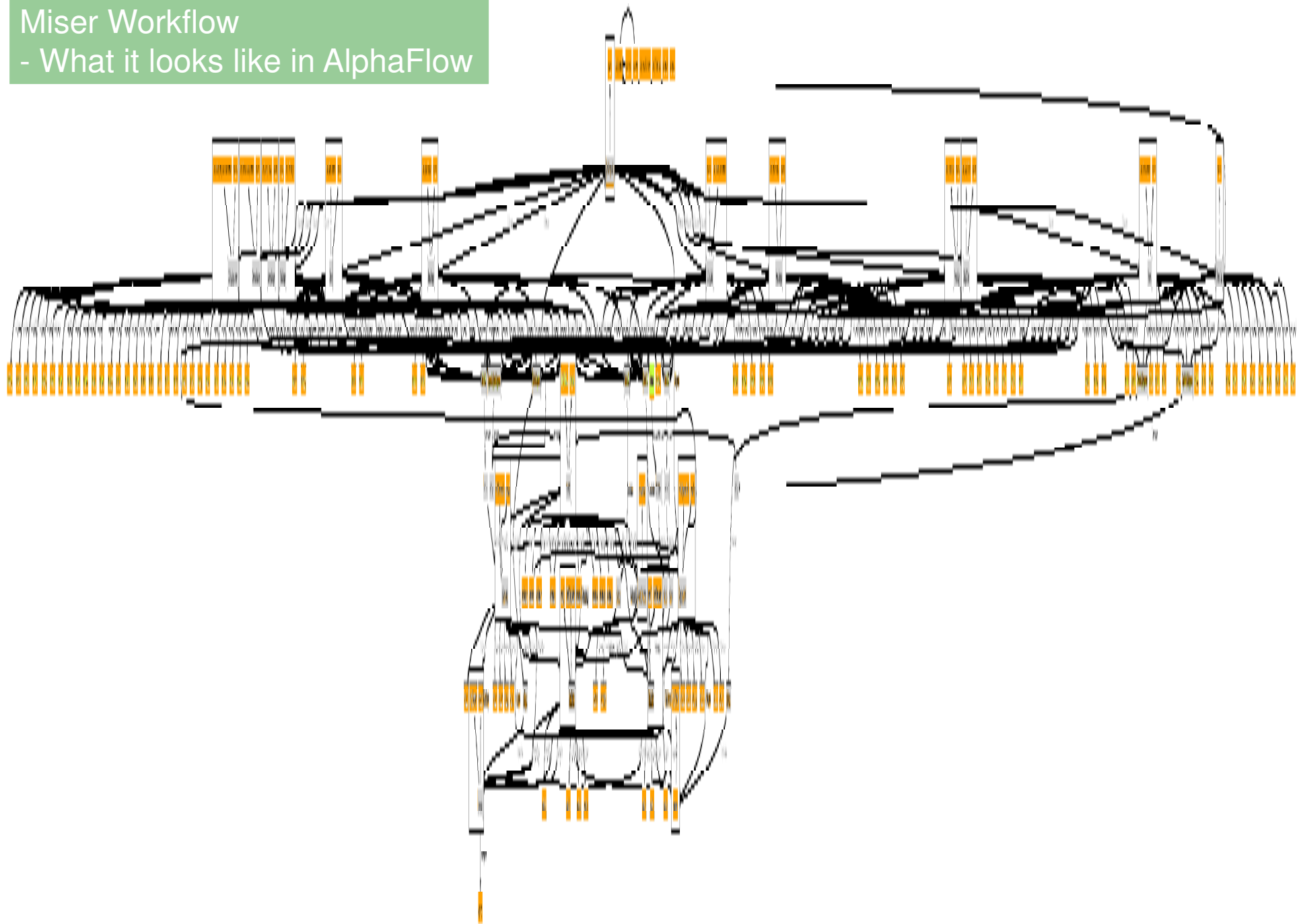
- No redundant data maintenance
- Everyone is using the same **exact** data
- Stored and backed up in a central location on a stable system
- Easily regenerated when
 - A person “puts on a hat”
 - There is a reorganization

Miser Workflow
- What we think it looks like



- Notes:**
- 1) Expedite (via Miser) moves req. directly to Check OUT.
 - 2) Send Back = Demote to any previous state.
 - 3) Attachments are allowed in any state.
 - 4) All roles have alternates
 - 5) No duplicate approvals within areas (ESHTRK/SA)

Miser Workflow
- What it looks like in AlphaFlow



AlphaFlow XML Example

```
<?xml version="1.0" encoding="iso-8859-1"?>
<!DOCTYPE workflow SYSTEM "../schemas/alphaflow.dtd">
<workflow
  id="leave_request_v1_9_10"
  title="Leave Request v1.9.10"
  startActivity="email_confirmation"
  description="Leave Request"
  object_name="cd_leave_request"
  onlyAllowRoles="Owner">
```

AlphaFlow XML Example

```
<!-- notify the owner -->  
<email id="email_confirmation"  
  title="Notify Owner"  
  template="db_wf_template"  
  mailSubject="Your Leave Request Has Been Submitted"  
  continue_activity="supervisor_approval">  
  <recipient type="actual_role" roles="Owner"/>  
</email>
```

AlphaFlow XML Example

```
<ntask id="supervisor_approval" title="Leave Request"
      startActivity="enter_supervisor_notify_supervisor">
  <assignees kind="actual" roles="Supervisor" />
  <exit id="yes" title="Approve" activities="exit_yes
    notify_requester_yes" />
  <exit id="yes_wo" title="Approve without comments"
    activities="exit_yes_notify_requester_yes" />
  <exit id="no" title="Deny" activities="exit_no_notify_requester_no" />
  <exit id="maybe" title="Request info" activities="exit_maybe
    notify_requester_maybe" />
</ntask>
```


AlphaFlow XML Example

```
<email id="notify_requester_yes" title="Notify Leave Request Approved"  
  template="db_wf_template"  
  mailSubject="Leave Request Approved"  
  continue_activity="enter_approved" >  
  <recipient type="actual_role" roles="Owner"/>  
  <recipient type="actual_role" roles="Supervisor"/>  
</email>
```

Role XML

- Use enterprise APIs to generate XML for known roles
- Returns all XML between <ROLE> tags

```
<ROLE>
  <ROLE_NAME>Group_Leader</ROLE_NAME>
  <KERBEROS_PRINCIPAL>arenam</KERBEROS_PRINCIPAL>
  <IS_IN_ROLE>1</IS_IN_ROLE>
  <GROUP_NAME>FL/CD/LSC/DBI/INF</GROUP_NAME>
  ..... (remaining tags omitted)
</ROLE>
```

Role XML

- Add XML for your specific workflow

```
<ROLE>  
  <ROLE_NAME>YourRoleNameHere</ROLE_NAME>  
  <KERBEROS_PRINCIPAL>lauri</KERBEROS_PRINCIPAL>  
  <IS_IN_ROLE>1</IS_IN_ROLE>  
  <HEADED_BY_KP>arenam</HEADED_BY_KP>  
</ROLE>
```

Web Documentation

- <http://wwwserver2.fnal.gov/cfdocs/AlphaFlow>