

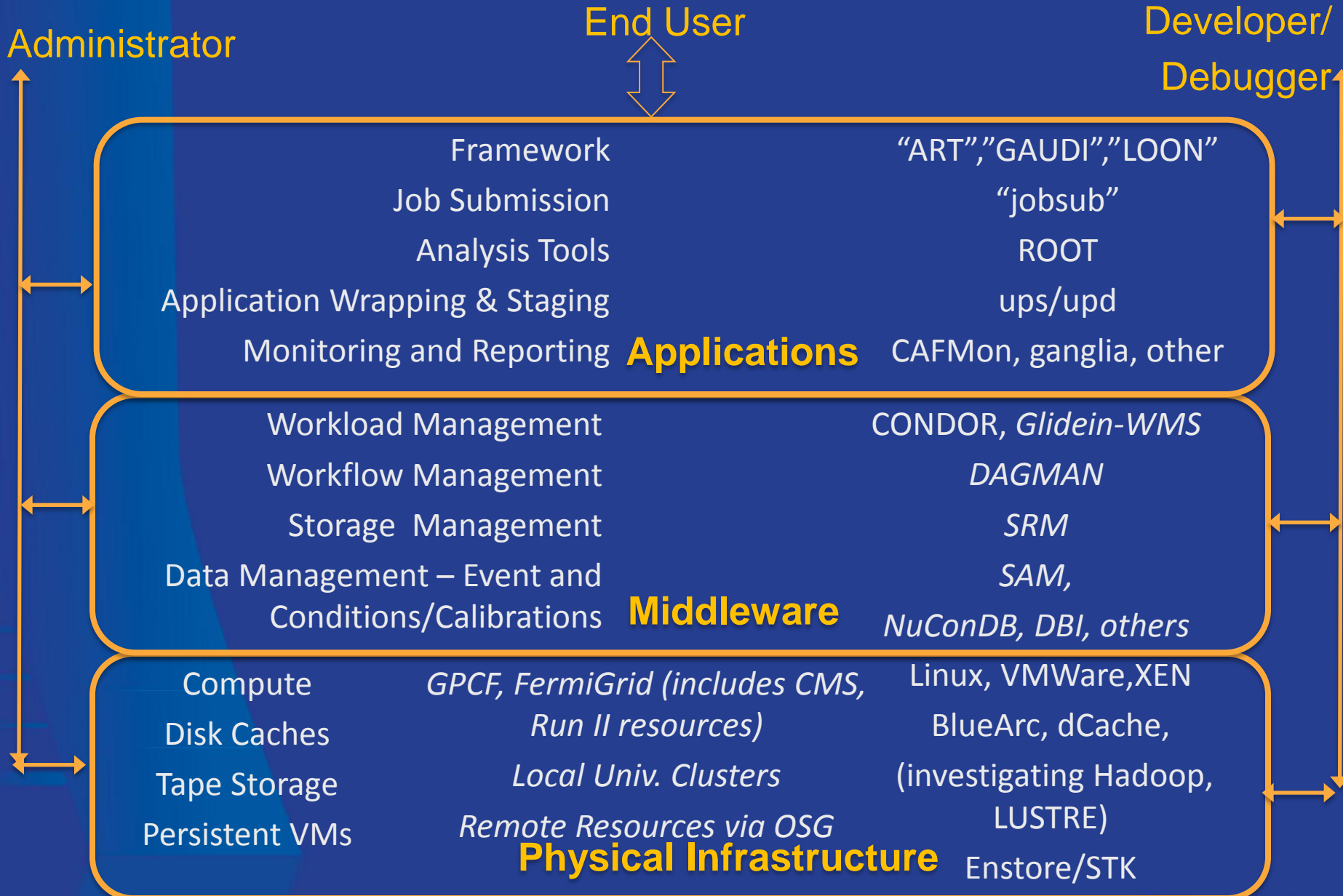
Title of the talk

Your name

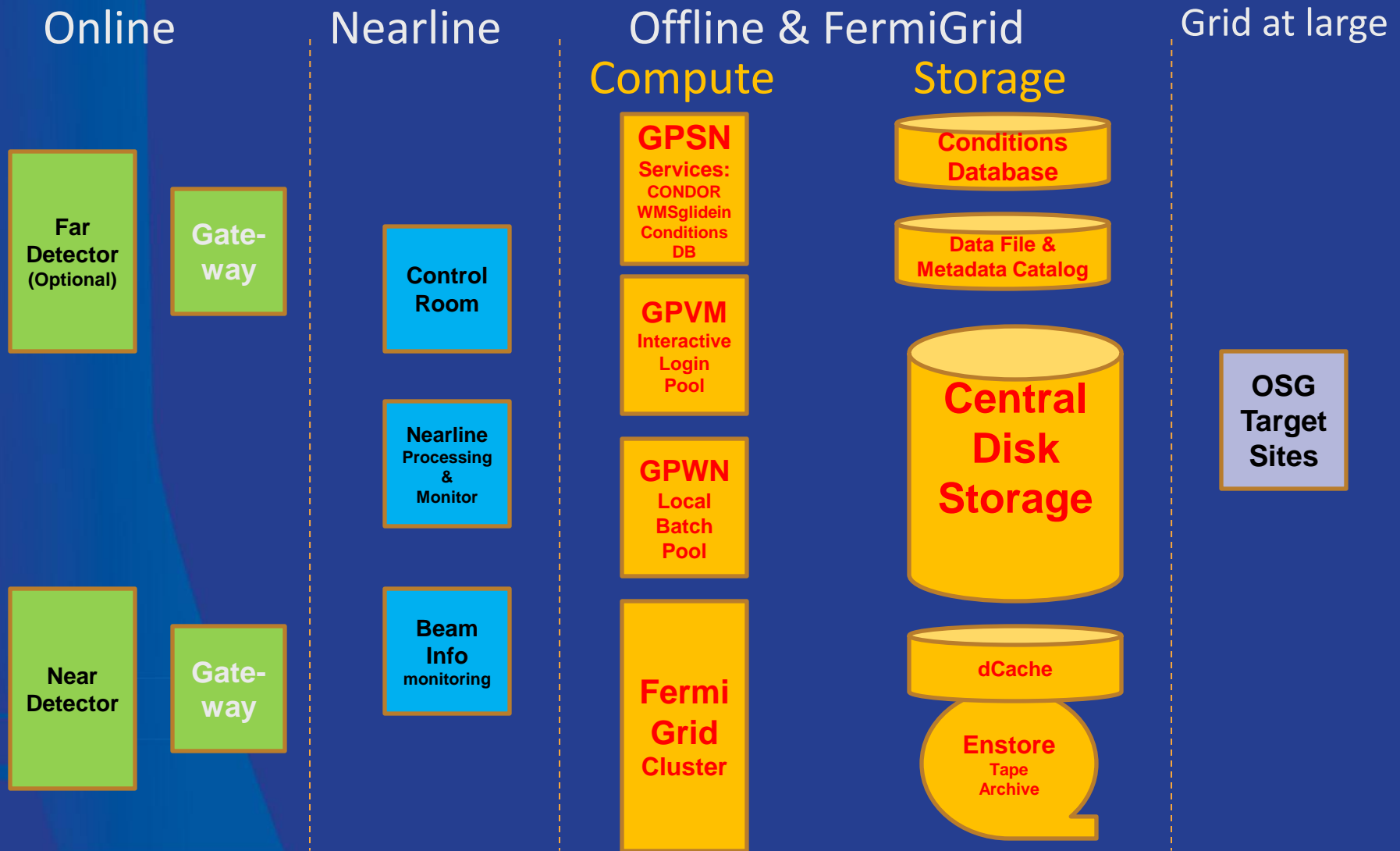
Fermilab

October 1, 2011

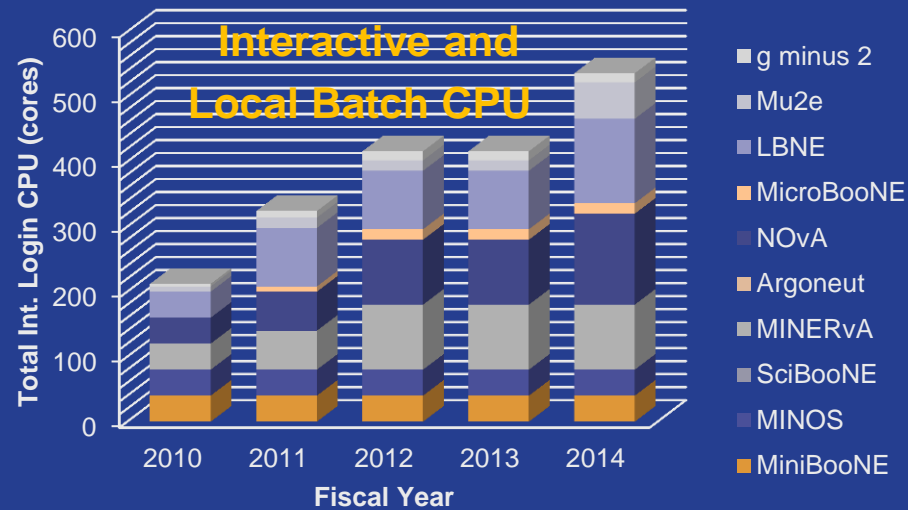
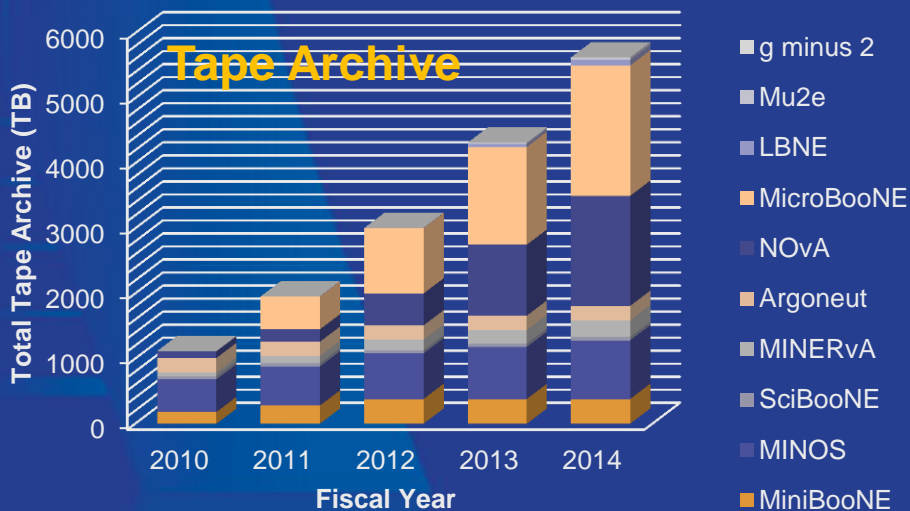
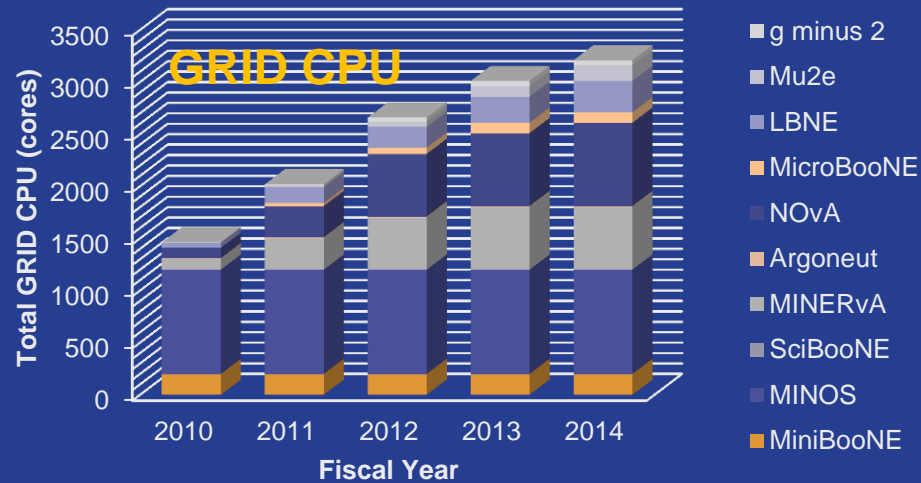
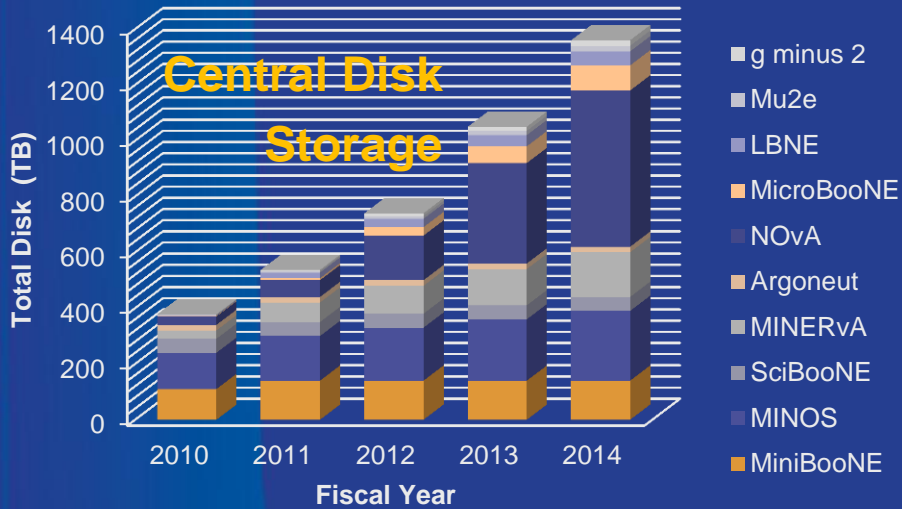
Intensity Frontier Software Architecture



Intensity Frontier Hardware Architecture



Intensity Frontier Computing Resources

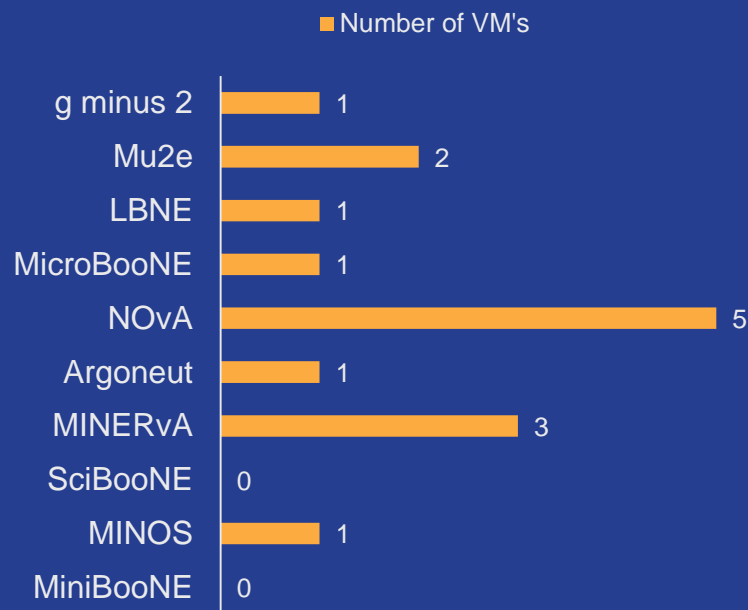


GPCF: General Physics Computing Facility

What is GPCF?

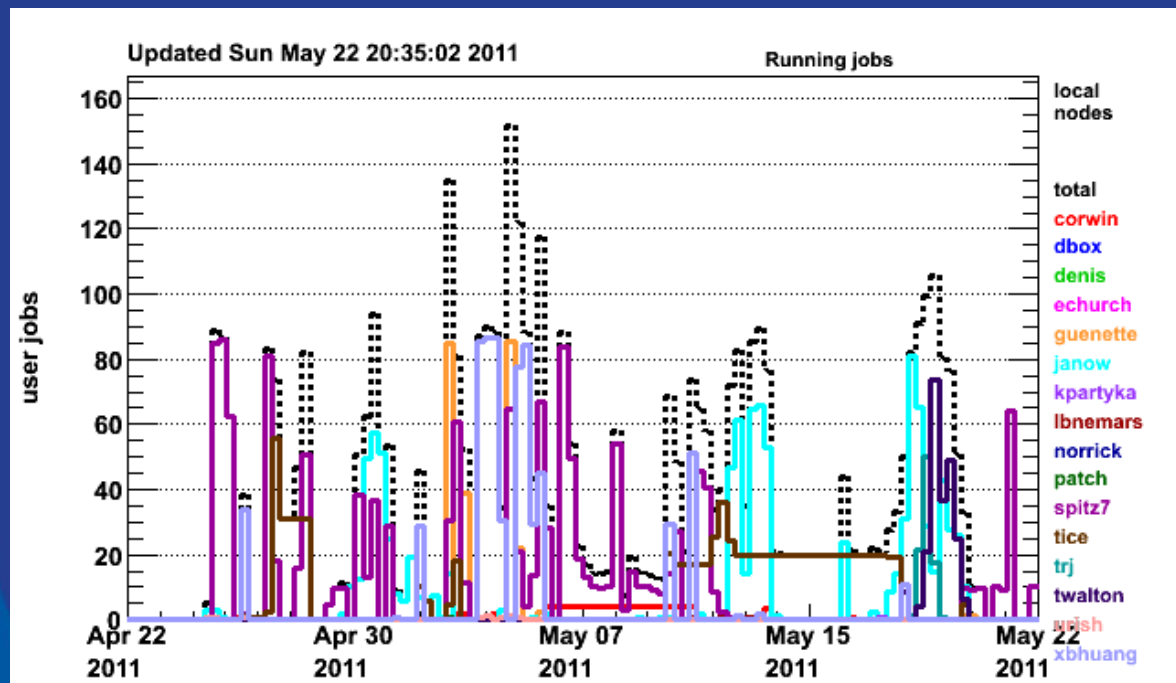
- Interactive login VM's (Virtual Machines) and "Local" Condor Batch slots.
- Each VM comprises 4 computing cores and 4GB memory.
- Central Disk Storage mounted as appropriate for each experiment.
- MINOS and MINERvA have their own dedicated clusters.

GPCF Virtual Machine Assignment



GPCF Local Batch

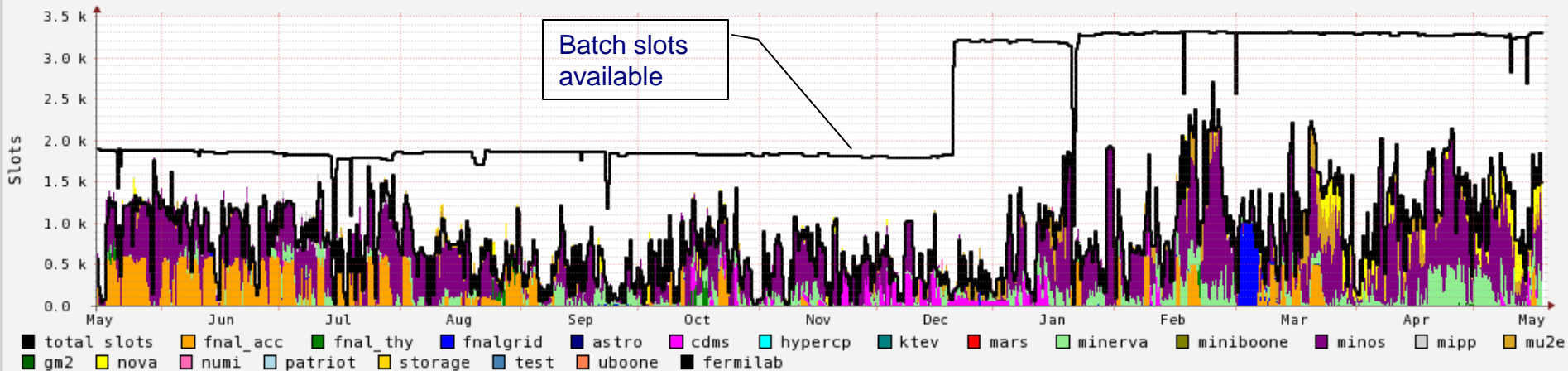
- GPCF Local Batch is for running small jobs and preparing jobs for the GRID.
- GPCF provides 88 batch slots. MINERvA and MINOS have their own local batch systems with 30 & 32 slots respectively.
- Chart shows the number of GPCF jobs, per user, for the last month.



GP GRID usage (last 12 m)

GP GRID=Fermilab General Purpose Grid Cluster

fnpc4x2 - fermilab V0 Usage by group - Last Year



Maximum Average Minimum LastVal

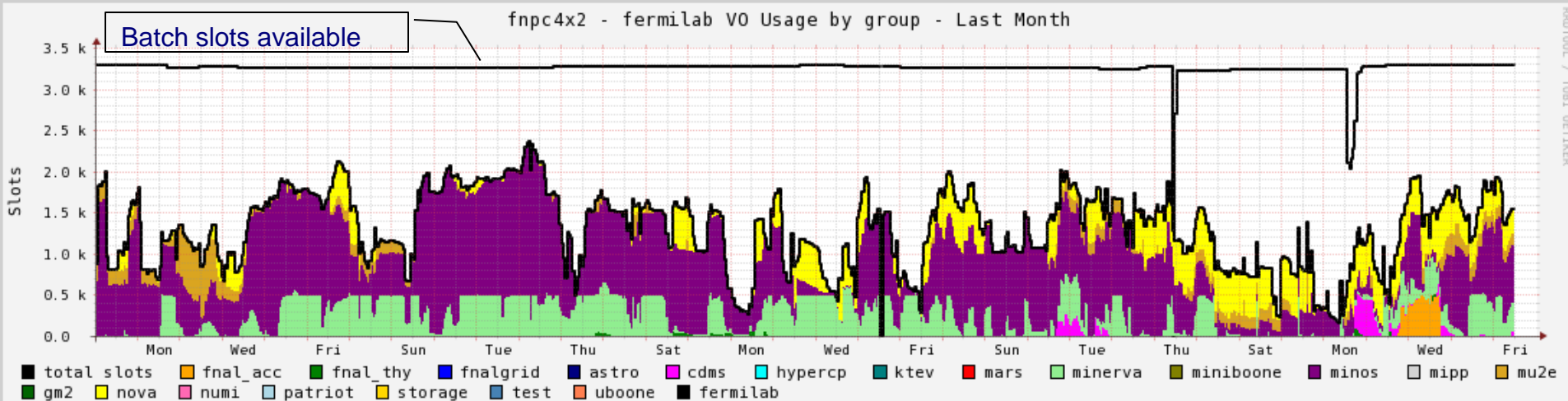
	Maximum	Average	Minimum	LastVal
total slots	3299	2401.55	572	3291
fermilab	2691	815.89	0	1492
fnal_acc	615	119.64	0	0
fnal_thy	399	5.90	0	0
fnalgrid	1000	14.99	0	0
astro	0	0.00	0	0
cdms	511	24.08	0	8
hypercp	0	0.00	0	0
ktev	0	0.00	0	0
mars	0	0.00	0	0
minerva	551	94.69	0	294
miniboone	418	0.50	0	0
minos	1960	473.01	0	740
mipp	298	10.28	0	0
mu2e	649	56.64	0	139
gm2	0	0.00	0	0
nova	550	44.74	0	310
numi	120	0.45	0	0
patriot	100	0.26	0	0
storage	108	4.49	0	0
test	0	0.00	0	0
uboone	0	0.00	0	0

- MINERvA
- MiniBooNE
- MINOS
- MIPP
- Mu2e
- Gm2
- NOvA

Use of this resource by D0, CDF, and OSG are not shown.

GP GRID usage (last month)

GP GRID=Fermilab General Purpose Grid Cluster



Maximum Average Minimum LastVal

	Maximum	Average	Minimum	LastVal
total slots	3291	3252.10	2	3291
fermilab	2358	1303.56	0	1547
fnal_acc	498	12.10	0	0
fnal_thy	96	2.43	0	0
fnalgrid	1	0.00	0	0
astro	0	0.00	0	0
cdms	442	12.69	0	58
hypercp	0	0.00	0	0
ktev	0	0.00	0	0
mars	0	0.00	0	0
minerva	628	250.24	0	341
miniboone	1	0.01	0	0
minos	1850	754.18	0	714
mipp	0	0.00	0	0
mu2e	626	72.47	0	138
gm2	0	0.00	0	0
nova	622	199.43	0	296
numi	0	0.00	0	0
patriot	0	0.00	0	0
storage	0	0.00	0	0
test	0	0.00	0	0
uboone	0	0.00	0	0

MINERvA
 MiniBooNE
 MINOS
 MIPP
 Mu2e
 Gm2
 NOvA

Use of this resource by D0, CDF, and OSG are not shown.

Intensity Frontier Computing Manpower

CD Manpower

- Software development, maintenance and support.
- Support for experiment computing setup and data operations.
- Infrastructure procurement, commissioning and operations (not included in Exp. Manpower requests).

Experiment Requests for SW & Data Operations Support

